A low-angle photograph of a forest with sunlight filtering through the trees. The image shows several large tree trunks in the foreground, reaching towards a dense canopy of green leaves. A bright sun is visible in the center, creating a lens flare effect. The overall scene is bright and natural.

Protecting & Enhancing Urban Nature Amid the Housing Crisis

Presented by Camille Lefrançois

Co-authors: Amelia Needoba, Zhaohua (Cindy) Cheng, and Cassandra Cummings



The Issues

The Crises



Housing



Climate change



Biodiversity

Competing for Limited Space



- Where do we see as ‘vacant land’?
- How do we determine the ‘highest and best use’?

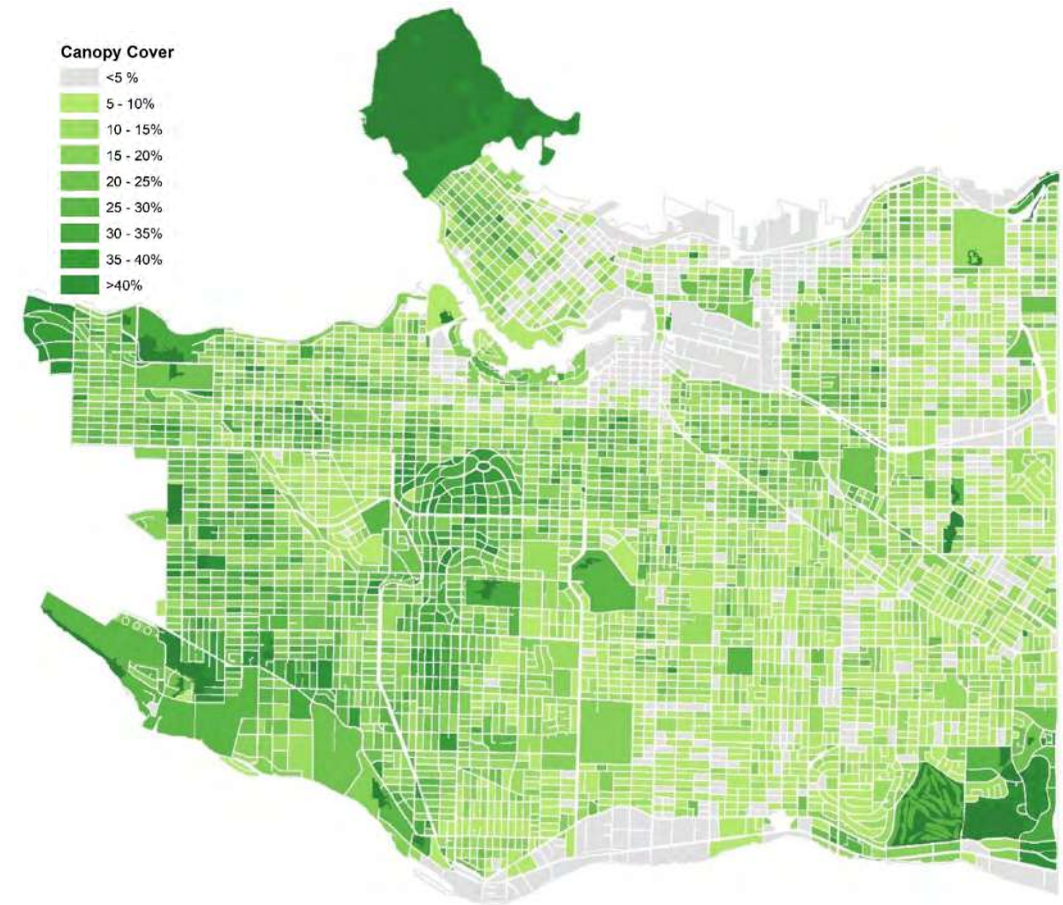


Competing for Limited Space



- The climate and biodiversity crises tell us that we need urban nature...
 - ... and we need it close by

Research shows that **lower greenness within 100 m of a residence is associated with more deaths** during extreme heat events





The Tools



Integrate Nature Into Land Use

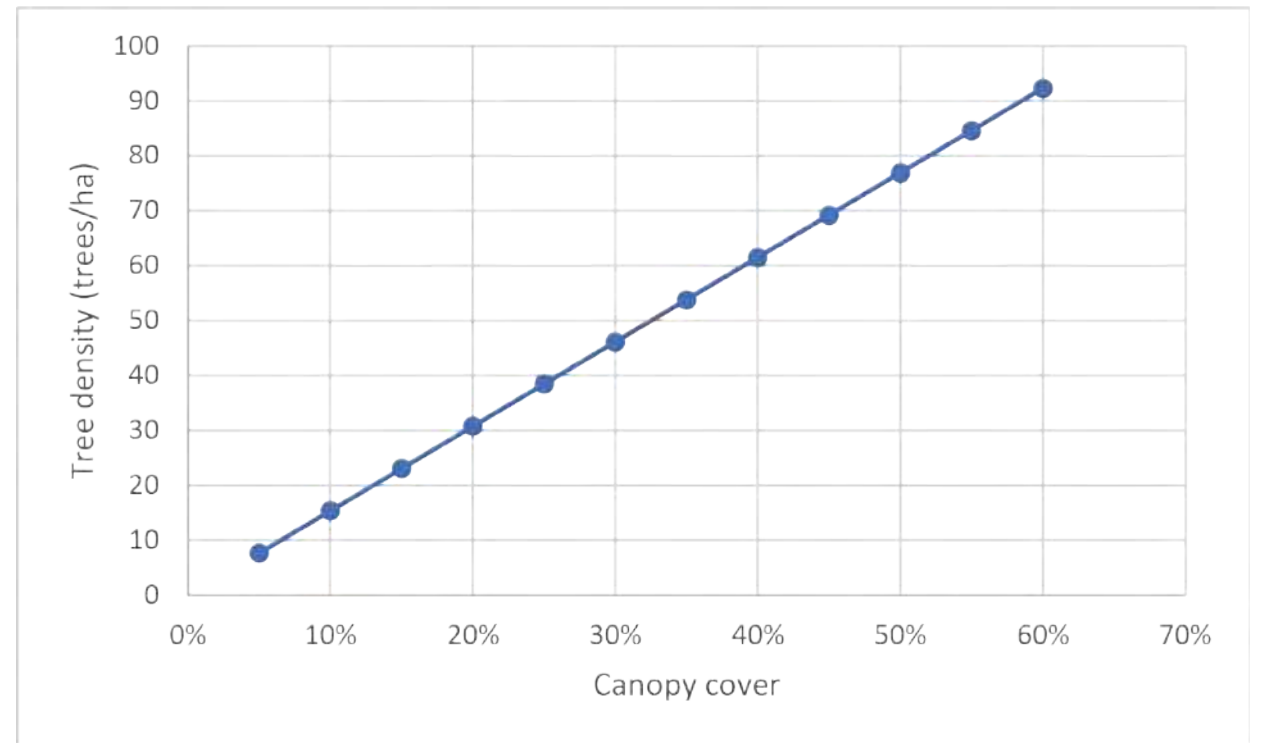


- Translating environmental targets into landscaping requirements



Target of **25% tree canopy cover** by 2051

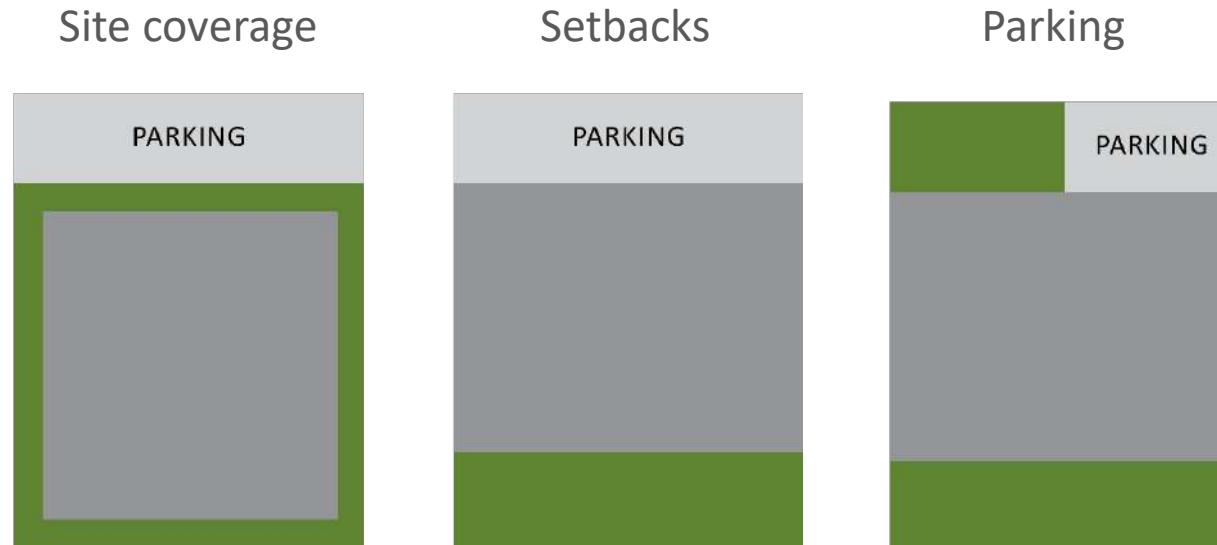
Urban Forest Management Plan
March 2024
City of Vaughan



Make Space for Nature



- Land use regulations drive the space available for nature:



- And think underground: utilities and structures

Make Space for Nature

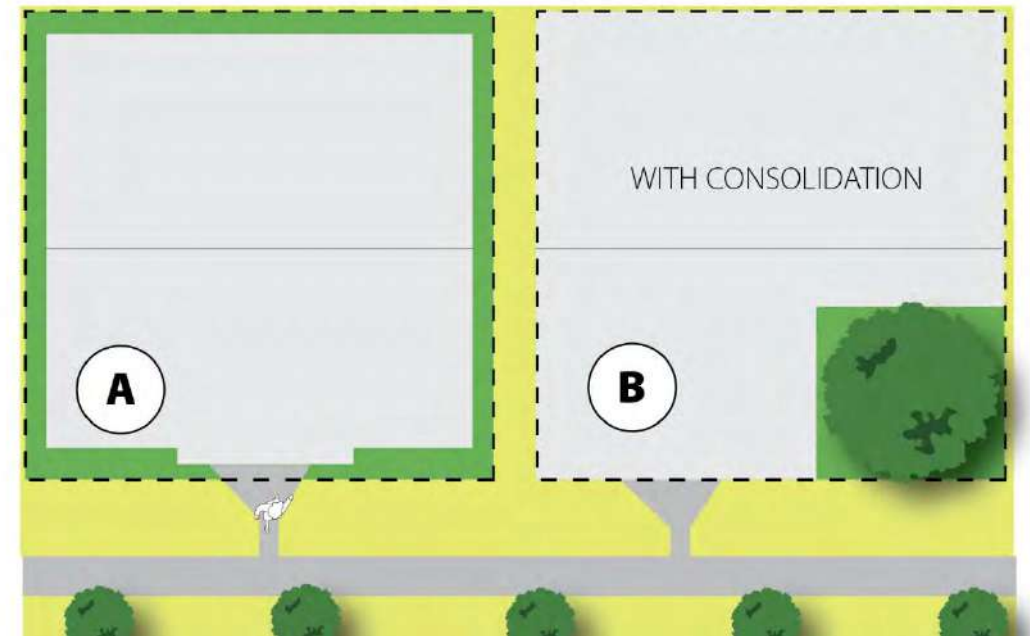


- Land use regulations drive the space available for nature



- Pervious area requirements can secure the space

Same total pervious area with varied configurations:
(A) perimeter vs (B) consolidated for tree planting potential



Make Space for Nature



- **Environmental Development Permit Areas:** Plan around, protect, and restore ecosystems
 - Learn about and respond to site conditions
 - Provide direction and flexibility to make informed site planning decisions



City-wide



Sensitive ecosystems

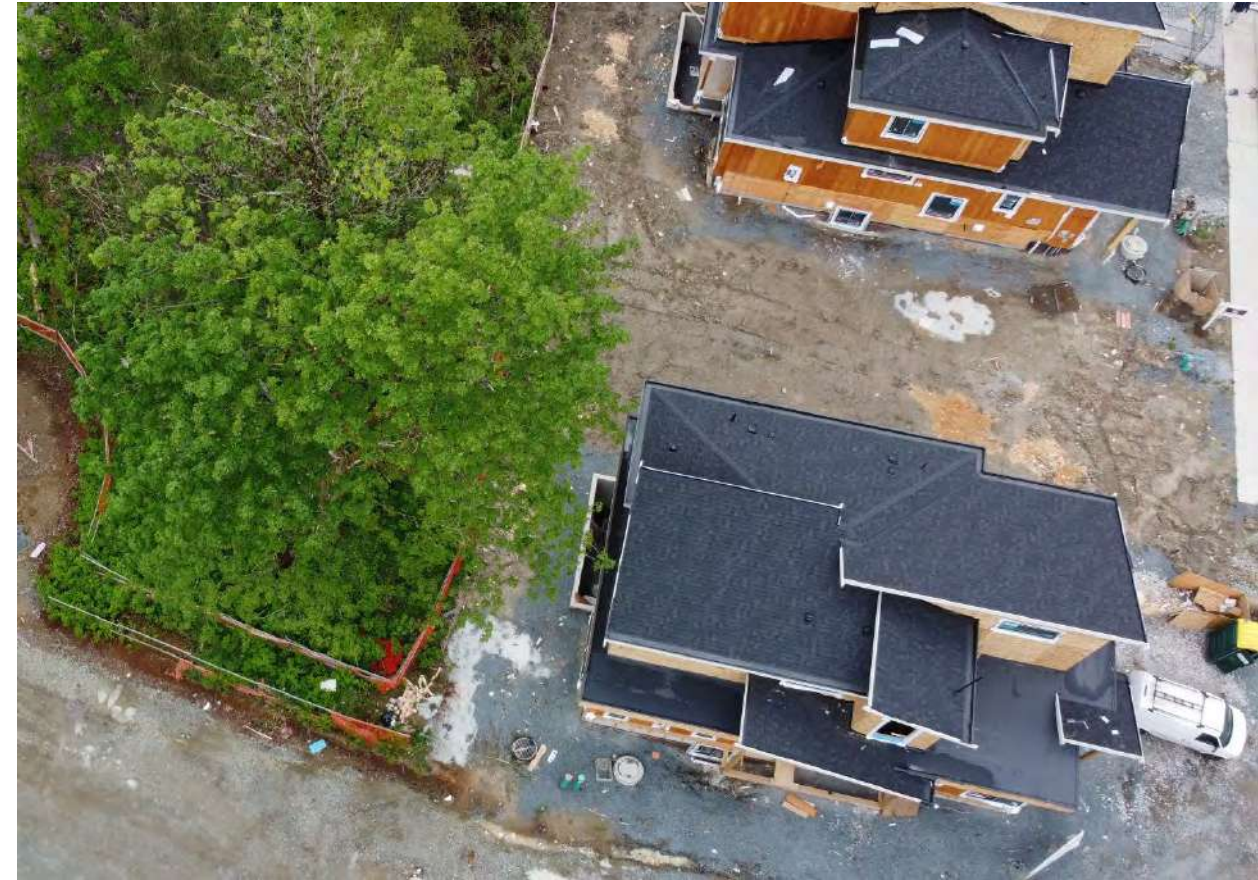


Biodiversity network

Make Space for Nature



- **Tree bylaws:** increase tree retention and ensure canopy replacement
 - Can focus on public and private land (where provincial jurisdiction exists)
 - Only as effective for tree retention as land use bylaws allow it to be





Moving Forward

Dining

Should Provinces Do More?



- Considering provincial mandates for **no net loss** of sensitive ecosystems

Washington State Growth Management Act requires that all cities and counties adopt development regulations that protect critical areas:

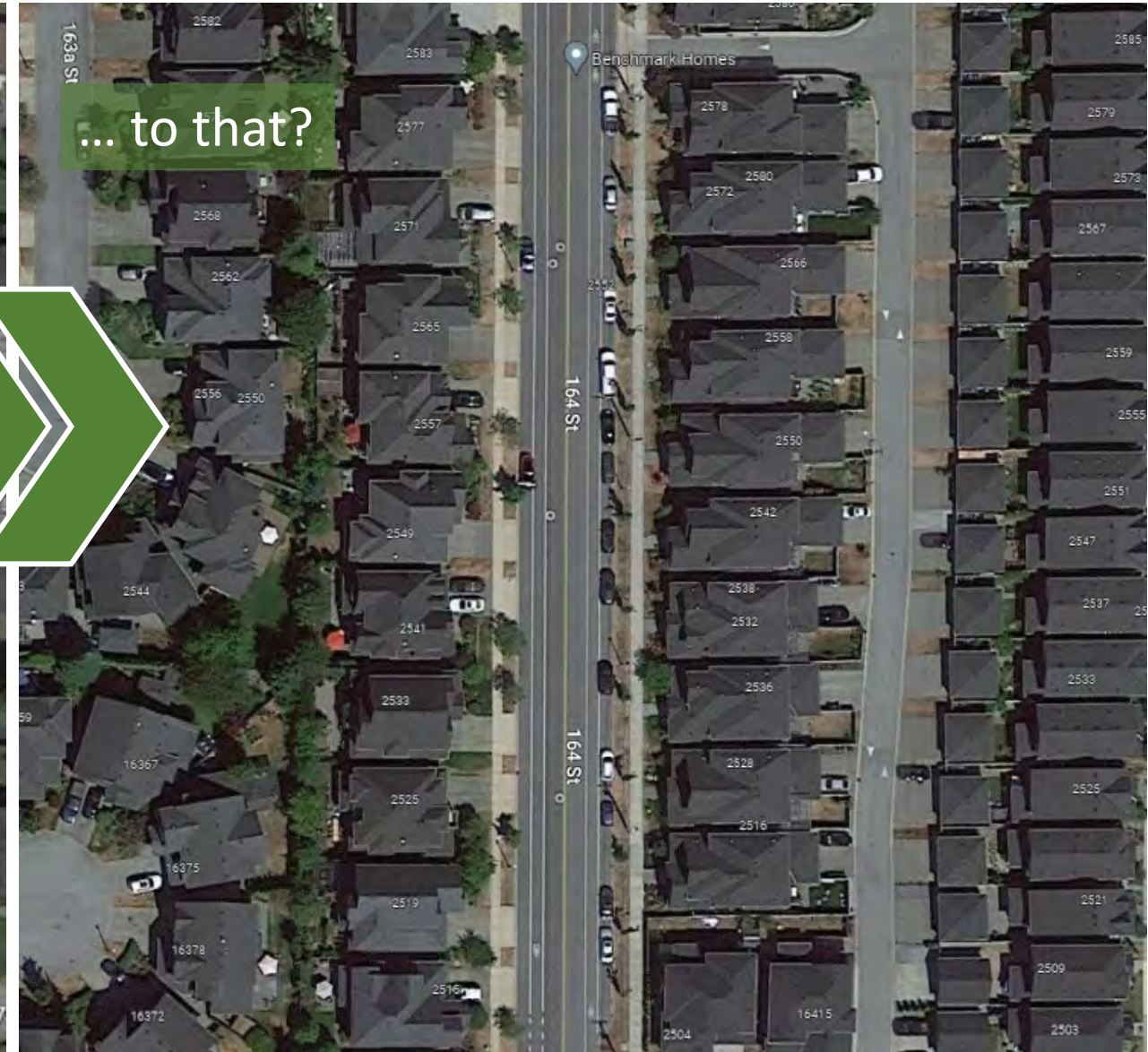
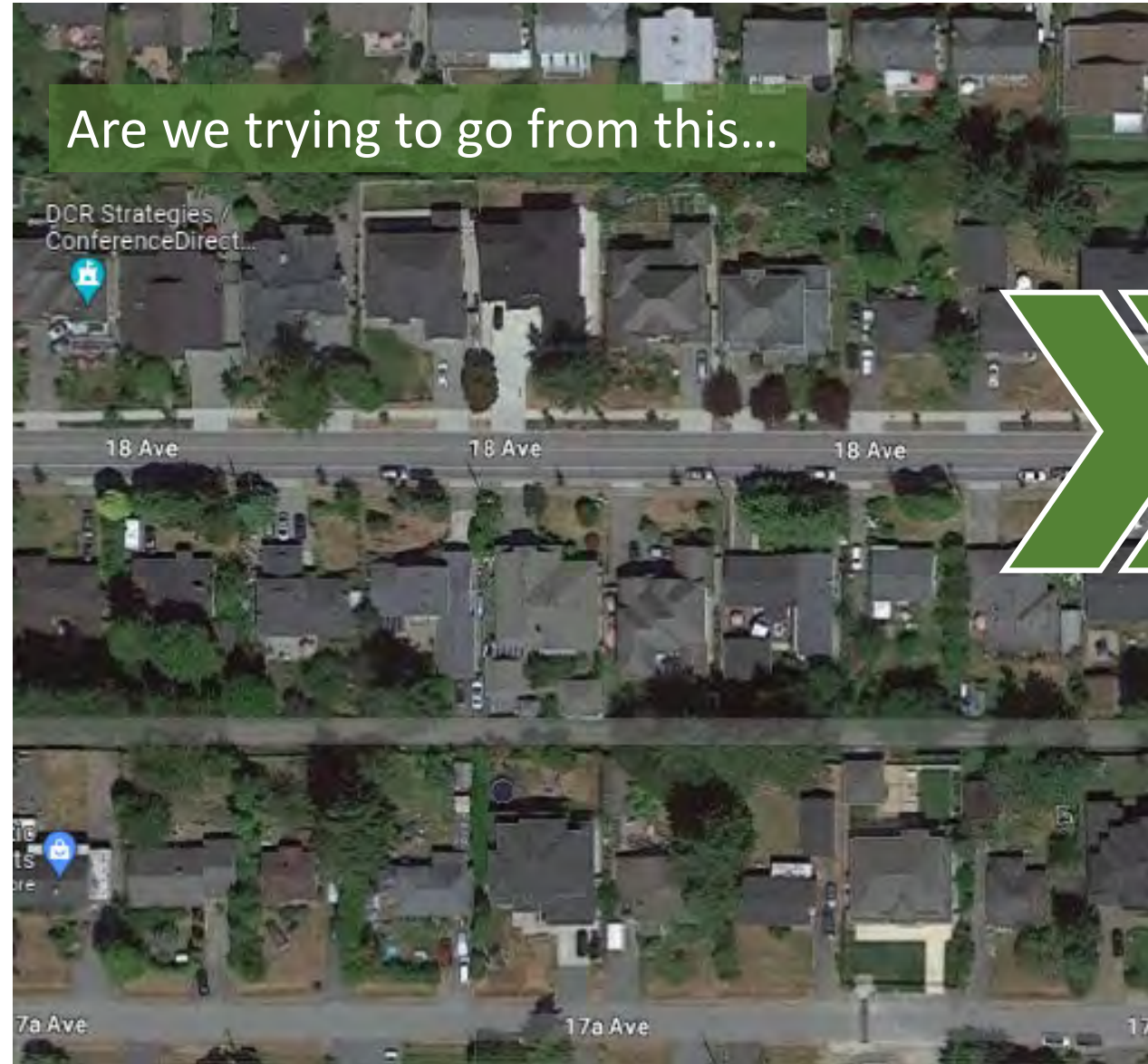
- Wetlands
- Areas with a critical recharging effect on aquifers used for potable water
- Frequently flooded areas
- Geologically hazardous areas
- Fish and wildlife habitat conservation areas

What is our vision?



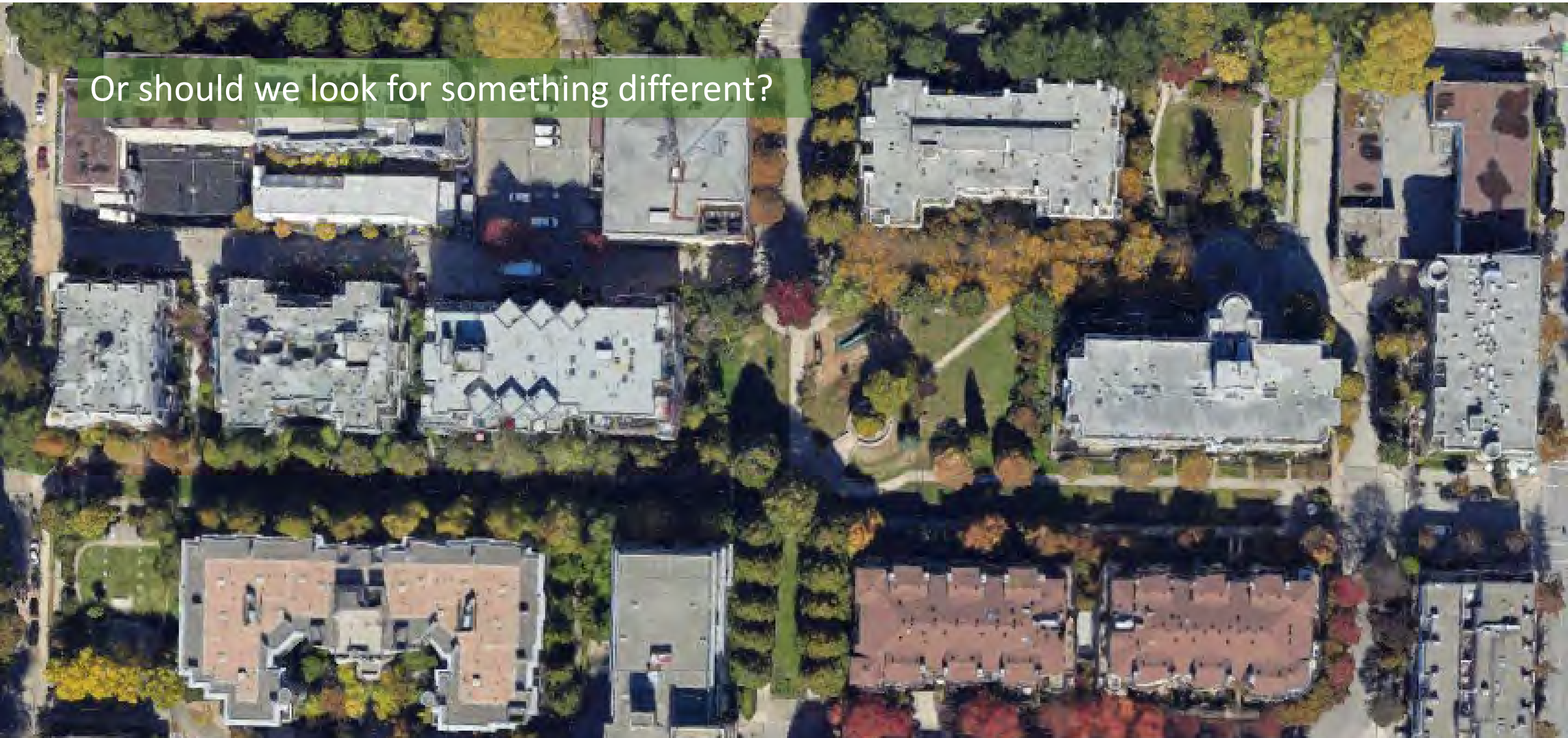
Are we trying to go from this...

... to that?



What is our vision?

Or should we look for something different?



Thank you!

Metro Vancouver Tree Regulations Toolkit

Second Edition



March 2024

Prepared by:

DIAMOND HEAD

Commissioned by Metro Vancouver

metrovancouver
SERVICES AND SOLUTIONS FOR A LIVABLE REGION



For more information on this Toolkit, visit

<https://metrovancouver.org/services/regional-planning/Documents/metro-vancouver-tree-regulations-toolkit.pdf>

Or download the PDF here:



DIAMOND HEAD