

BC's COVID-19 Response for Emergency Shelters and Women's Transition Housing & Supports Programs: Responses, Statistics, and Stories

July 2022

Rebecca Siggner, Manager, Research

Danielle Scott, Manager, Supportive Housing & Programs

Sairoz Sekhon, Director, Women's Transition Housing & Supports Programs

Agenda

- About BC Housing
- Why Collecting Stat about COVID-Response Shelters and WTHSP Spaces
- How Data is Used to Inform Planning
- Responses, Statistics, and Stories for
 - Emergency Shelters in BC
 - Women’s Transition Housing and Supports Programs (WTHSP) in BC
- Outcomes for People Experiencing Homelessness and Women and Children Fleeing Violence
- Discussion

About BC Housing



Addressing
Homelessness

Housing with
Support Services

Social
Housing

Rent Assistance in the
Private Market

Affordable
Rental Housing

Owner Purchased
Homes

Ways Province Supported Service Providers



Expansion sites



PPE and supplies



Safe Staffing Strategy/Temporary Pandemic Pay



Reporting

Why Data Is Collected

Understand
Impact of
Shelters/WTHSP
During Pandemic









BC Housing
Needs to
Demonstrate
Accountability

Understand
Impact of
Pandemic for
Shelters/WTHSP

Inform Future Pandemic
and Emergency Planning

Inform Decision-
Making for
Current
Pandemic

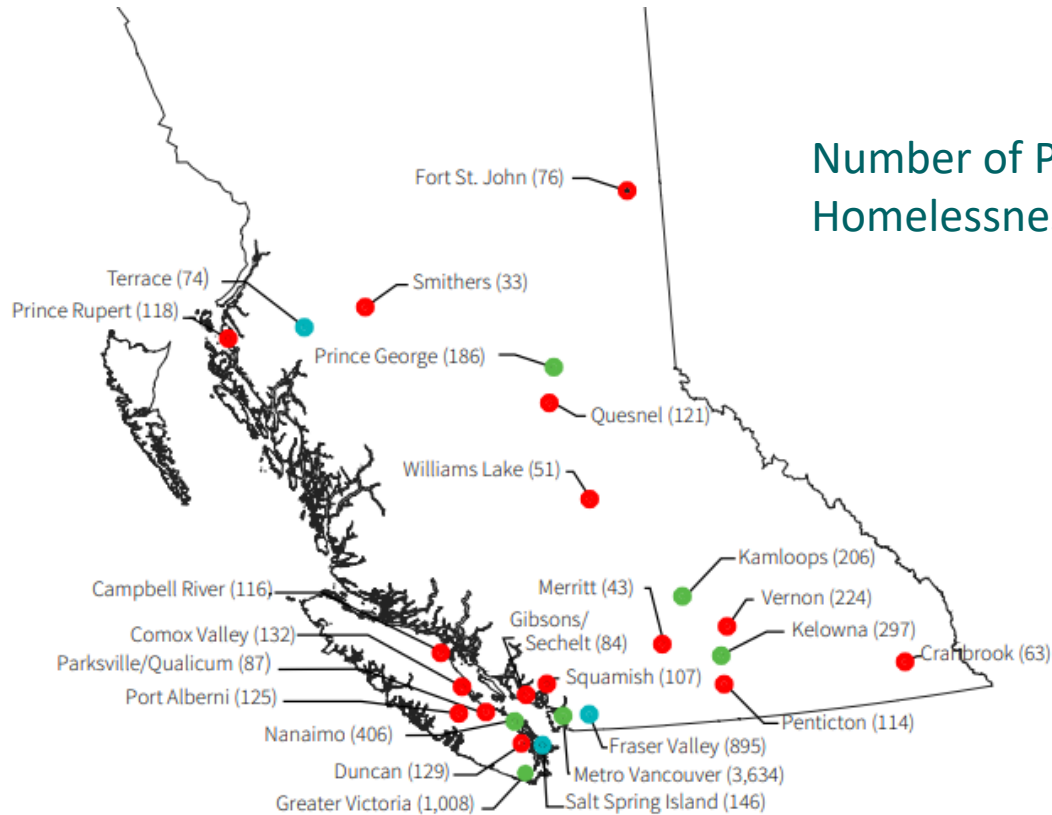
How Can We Use This Data

-  Inform sites/spaces opening/closing
-  Demonstrate accountability to Treasury Board
-  Demonstrate accountability to the public
-  Enable informed discussions with providers regarding operations
-  Demonstrate outcomes
-  Inform program and policy changes

Discussion

- What kinds of data have you collected during the pandemic?
- Why was this data collected?
- How was it used?

Homelessness in British Columbia



Number of People Experiencing Homelessness in BC in 2020/2021

About BC Housing's Emergency Shelters

BC Housing Shelter Information

as of March 31, 2022



Emergency Shelter Type	Emergency Shelter Program	Temp Shelters	Extreme Weather Response Shelters	COVID-Response Emergency Shelters	TOTAL
2020-21 Operating Costs ¹	\$67 million	\$32.2 million	\$1.5 million	\$69.4 million	\$170.1 million
Number of Sites	68	44	45	92	249
Number of Spaces ²	2,210 (1,920 available due to physical distancing)	1,440 (1,160 available due to physical distancing)	630	2,000	6,280

1. 2021-22 Operating Costs were not available at the time of publication.

2. Extreme Weather Response Shelters and COVID-Response Emergency Shelters were set up with physical distancing already in place.

About BC Housing's Emergency Shelters

**Emergency shelters provide a place to sleep, eat and wash.
Shelters provide some or all of these basic services:**

Bedding mattress
or pad, pillow,
blanket and linens



Three meals a day



Shower and laundry
towel, soap, shampoo,
toothbrush, deodorant,
menstrual products



Laundry washing
facilities for clothes
and linens



EMERGENCY SHELTER



Access to support staff
and personalized help
from a case worker



Secure area for
belongings



Staff available 24 hours
a day, seven days a
week (year-round
shelters only)

About COVID-Response Emergency Shelters



670 spaces

Extended Temporary/Extreme Weather Response /Other Shelters



365 spaces

Civic Spaces



965 spaces

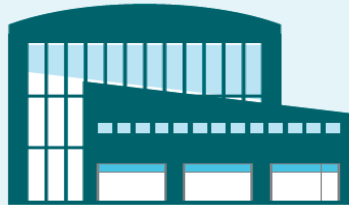
Leased Hotel Rooms



Stays at BC Housing's COVID-Response Emergency Shelters

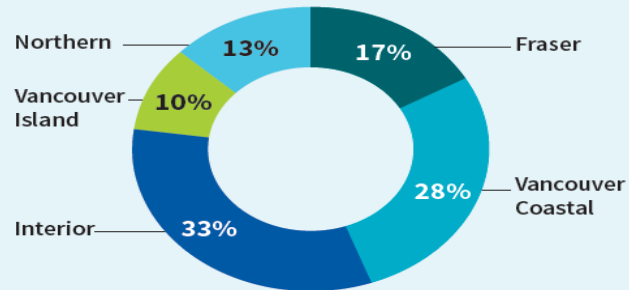
Approximately **31,000** Total Stays
at COVID-Response Emergency Shelters in B.C.

April 2020 - March 2022



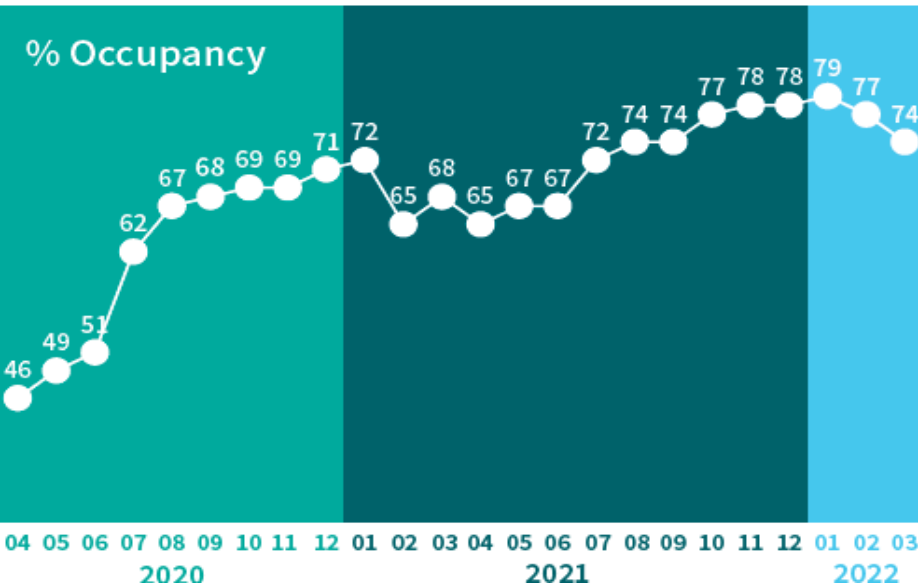
% of Stays at
COVID-Response
Emergency Shelters
in B.C. by Region

April 2020 - March 2022

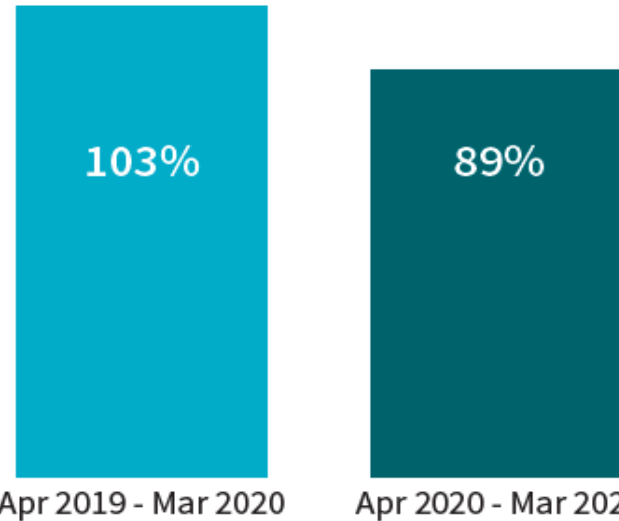


Emergency Shelters: Occupancy

BC Housing Funded **Occupancy** at **COVID-Response Emergency Shelters** in B.C. by Month

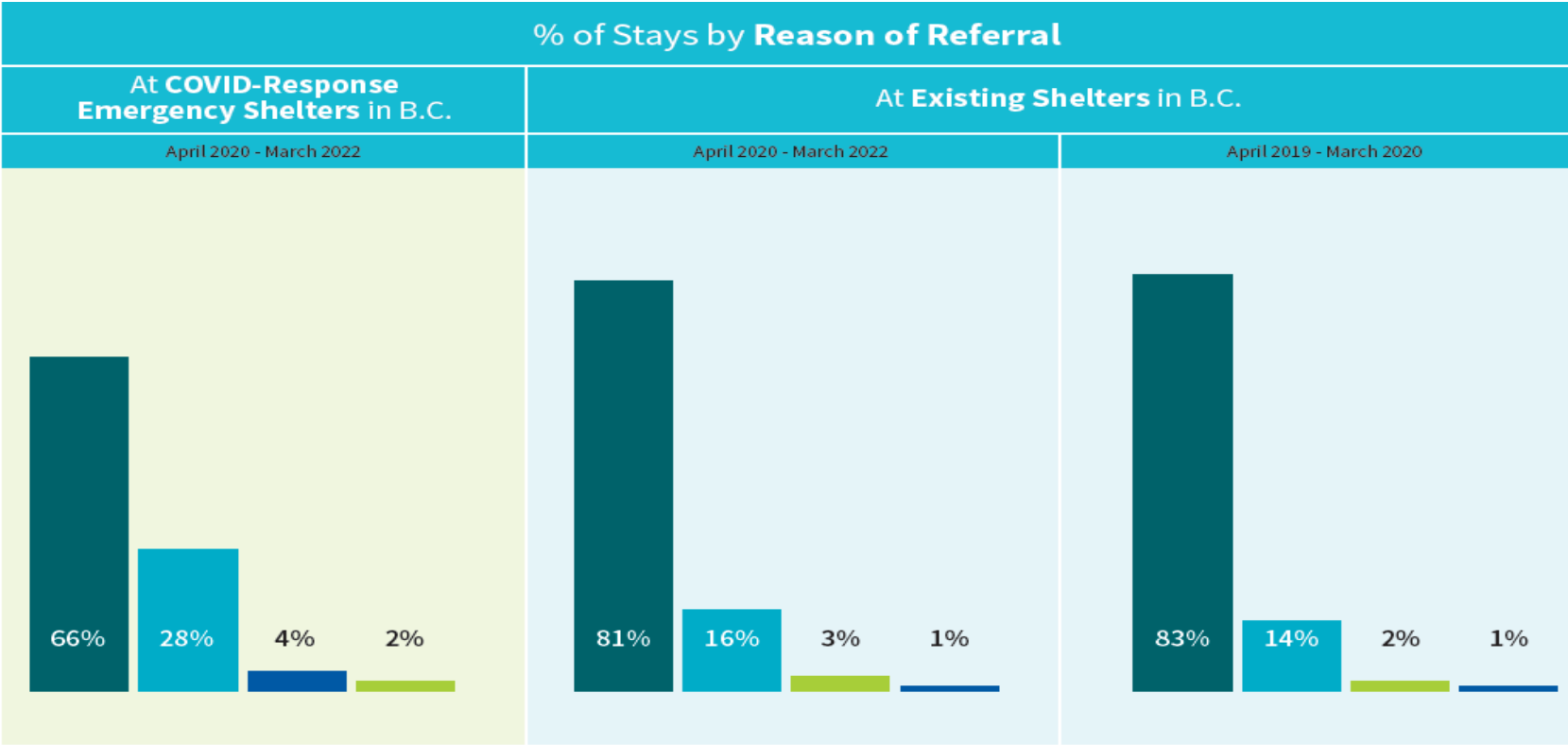


BC Housing Funded **Occupancy** at **Existing Emergency Shelters** in B.C. Pre-Pandemic (2019-20) and April 2020-March 2022



Shelters may be over-capacity, as some shelters spaces are funded through other sources or bring in extra mats.

Emergency Shelters: Reasons for Referrals/Stay



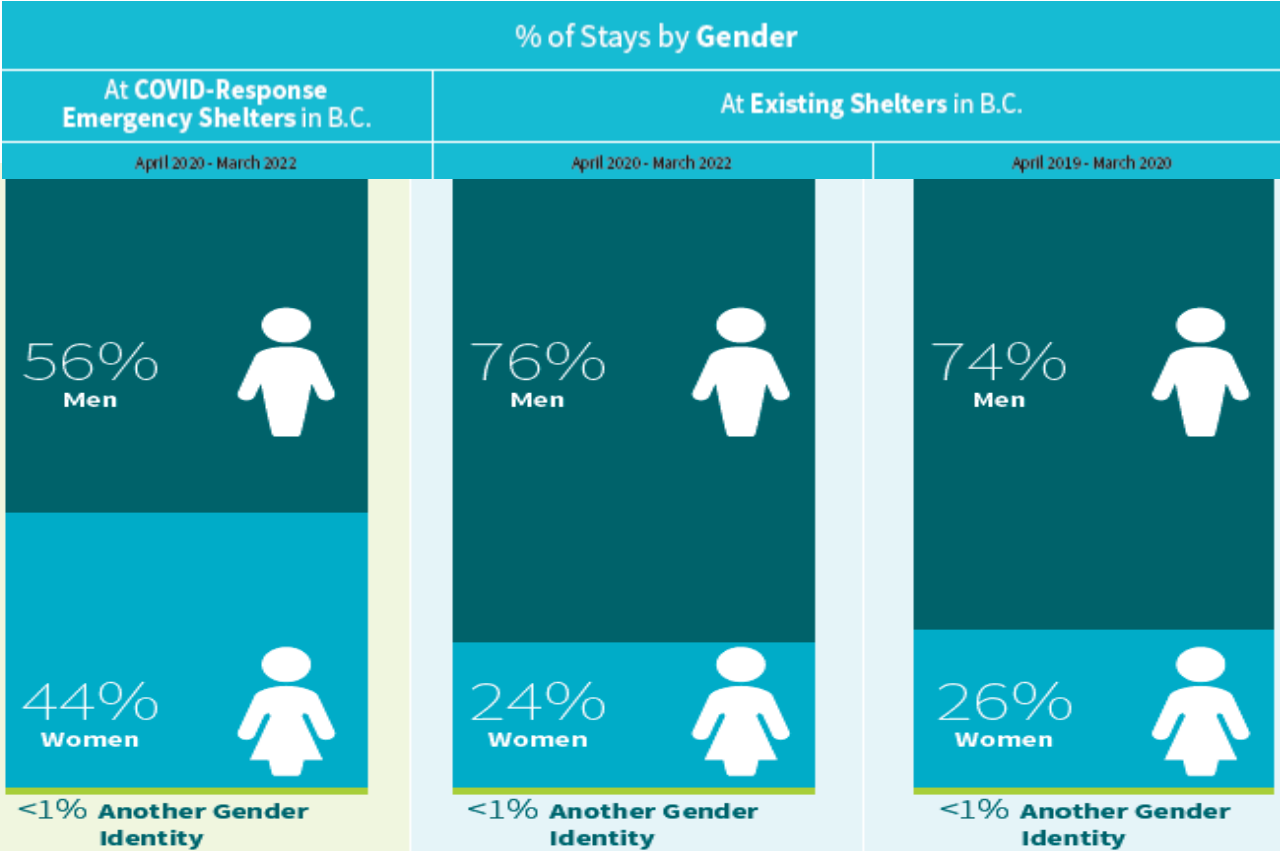
Housing Challenges

Referred to Shelter

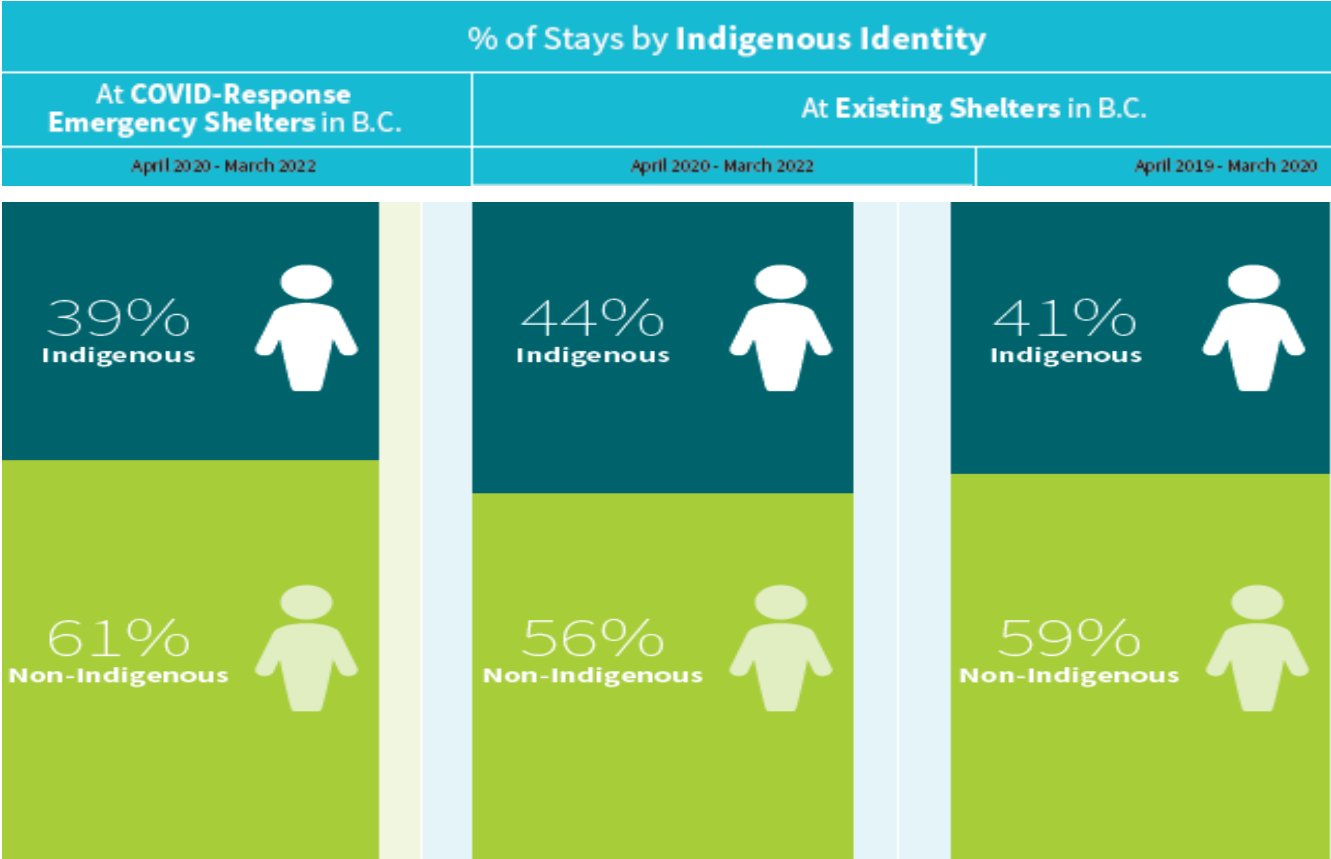
Medical Reasons

Other

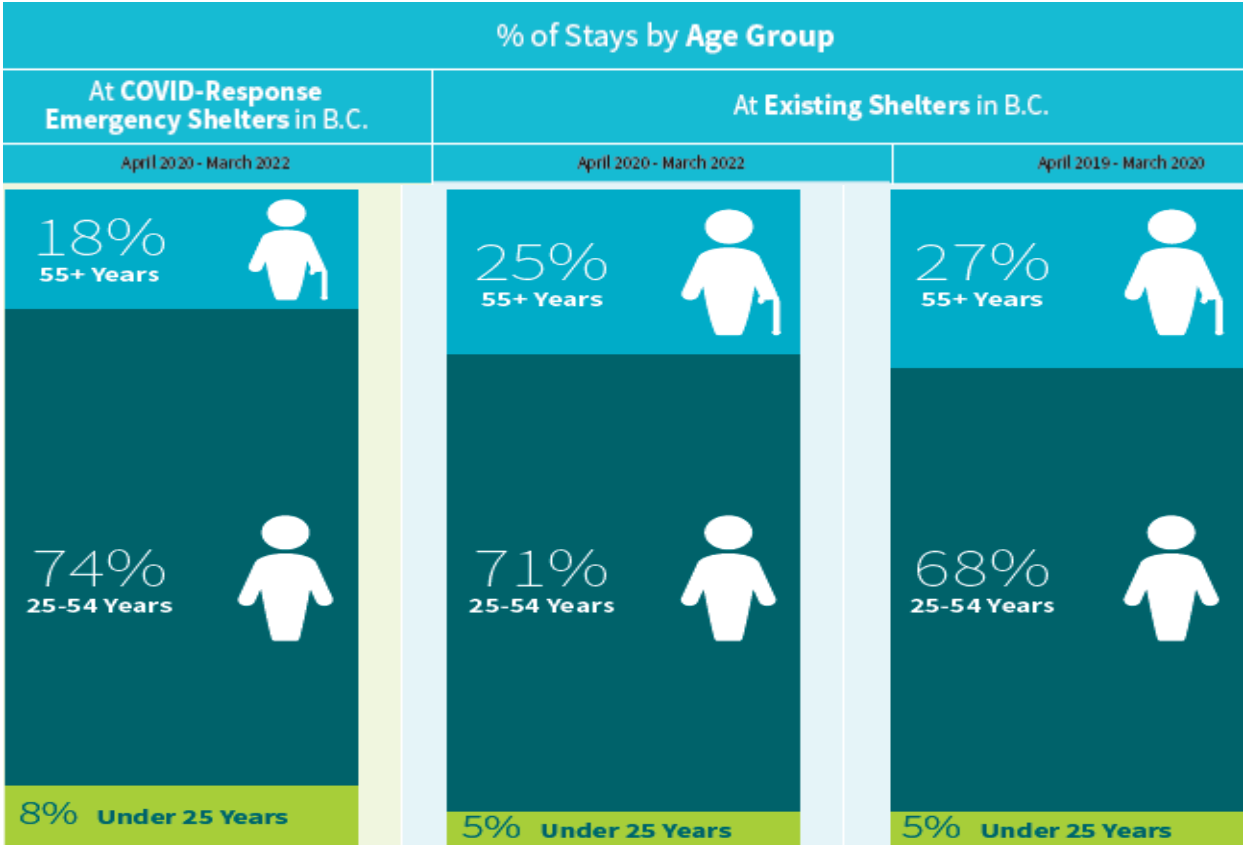
Emergency Shelters: Gender



Emergency Shelters: Indigenous Identity



Emergency Shelters: Age Groups



Emergency Shelters: Health Issues

% of Stays by **Health Conditions** at COVID-Response Emergency Shelters in B.C.

April 2020 - March 2022



67%

Addiction Issue



56%

Mental Health Issue



30%

Medical Issue



43%

Physical Issue

About Women's Transition Housing & Supports Program

- BC Housing provides support to **Transition Houses, Safe Homes, Second Stage Housing and Long Term Housing Programs** for women — with or without children — who have experienced violence or are at risk of experiencing violence
- The programs provide core services including: safe shelter and housing, support services, referrals and assistance in planning next steps

WTHSP Provincial Overview

Spaces by WTHSP Program Type Available as of March 31, 2022



1500 spaces
\$734 million
10 years

Building BC: Women's
Transition Housing Fund

26 Projects
Announced

\$ 49 Million
21/22 Annual Budget

 **80**
Non-Profits

 **77**
Communities

WTHSP Program Streams

TRANSITION HOUSES

- Support services & safe shelter (typically 30 days)
- 24/7 staffed
- Meals and immediate basic needs



SAFE HOMES

- Support services & safe, short term shelter (typically 10 days)
- In rural/remote communities
- Shelter = hotel/motel, apartment rental, private home



SECOND STAGE HOUSING

- Provide safe, affordable short-term housing with support services
- Referrals often from Transition House or Safe Home
- Assist women with next steps/ independent living



COVID Expansion Sites

- Temporary spaces (primarily hotels)
- Primarily set up to support:
 - Requirement for physical distancing
 - Self isolation, quarantine for those who are symptomatic or COVID+
 - Additional space if programs are full or at capacity
- At the start of pandemic (Spring 2020) we had close to 300 spaces and as of March 2022, over 100 spaces
 - All expansion spaces closed by end of June 2022



Impact of COVID on WTHSP's

- Increased violence
- Increased severity of violence
- Access to services
- Adapting services and sites
- Staffing Challenges

WTHSP: Stays During Pandemic Period

Number of Stays at WTHSP Sites

April 2020 – March 2022

At WTHSP Expansion Sites



1560

Women



1000

Accompanied Children

At WTHSP Existing Sites



7830

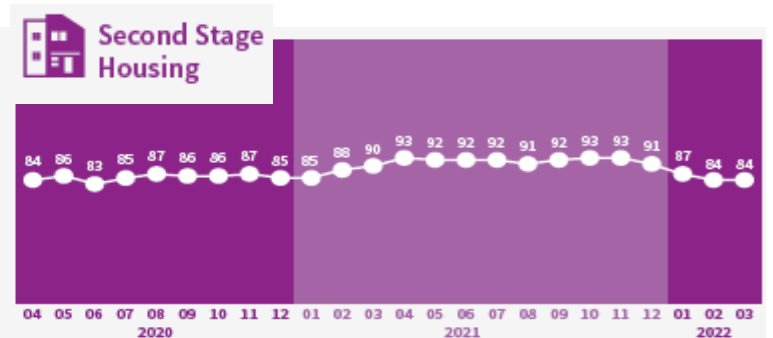
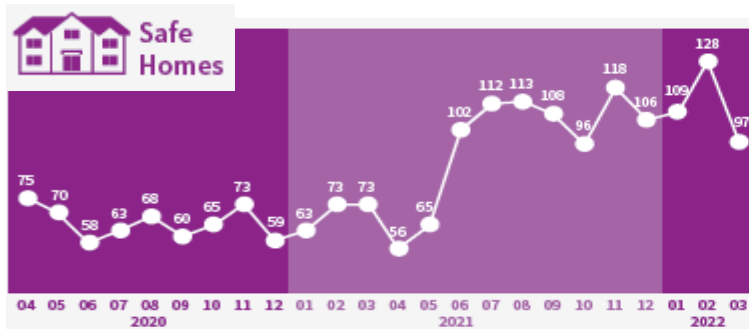
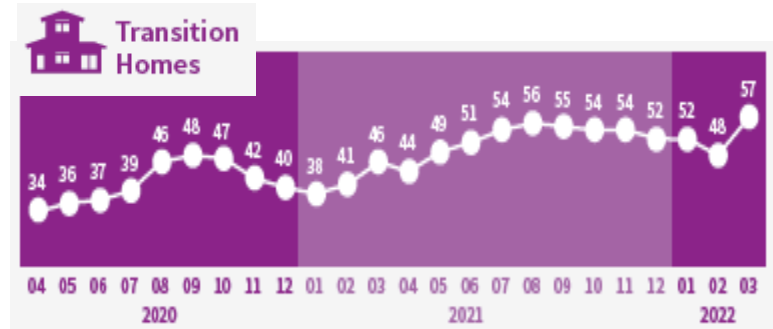
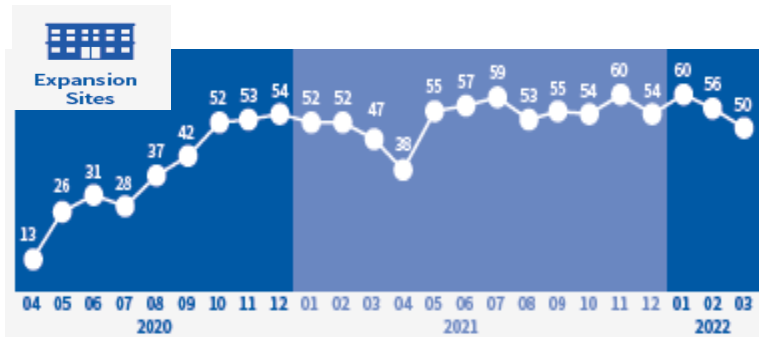
Women



4460

Accompanied Children

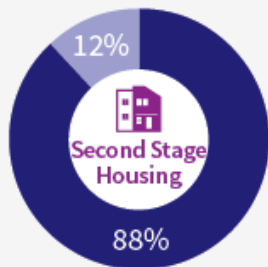
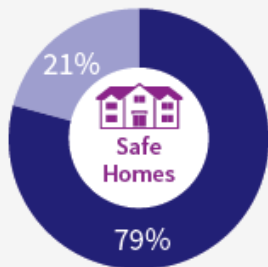
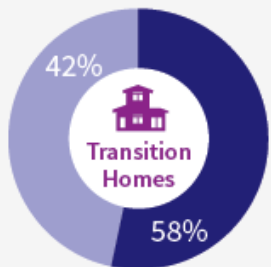
WTHSP: Occupancy During Pandemic Period (Percentages)



WTHSP: Impact of COVID at Existing Sites

Stays for Women at WTHSP Existing Sites by Whether Own Room Required During Pandemic and Program Type

April 2020 – March 2022



- No
- Yes - for COVID-related and other reasons

Stays for Women by Primary Reason for Referral to WTHSP Expansion Sites

April 2020 – March 2022

34%
For COVID-Related
Reasons

45%
Other Program Full

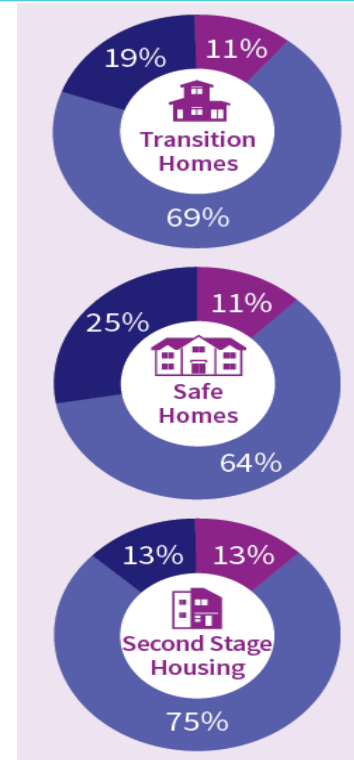
20%
Other

WTHSP: Age Groups

Stays for Women at WTHSP Sites by Age Group and Program Type

April 2020 – March 2022

At WTHSP **Expansion Sites**

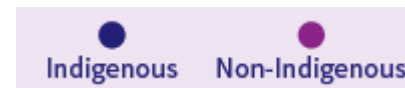
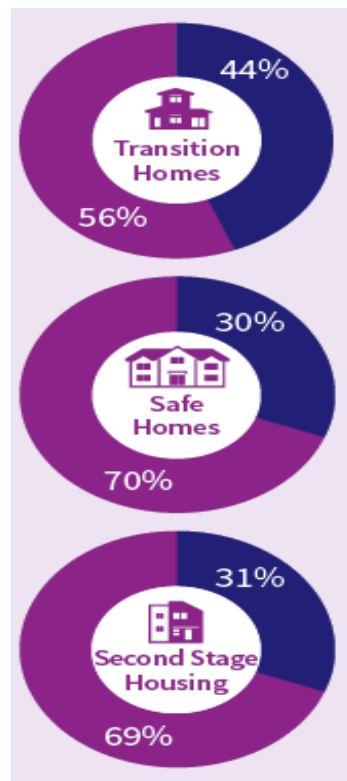


WTHSP: Indigenous Identity

Stays for Women at WTHSP Sites by Indigenous Identity and Program Type

April 2020 – March 2022

At WTHSP **Expansion** Sites



WTHSP: Children

Stays for Women at WTHSP Sites by Whether Accompanied by Children

April 2020 – March 2022

At WTHSP Expansion Sites



Expansion Sites



At WTHSP Existing Sites by Program Type



Transition Homes



Safe Homes



Second Stage Housing



Stays for Accompanied Children by Age Group

WTHSP: Children

Stays for Women at WTHSP Sites by Whether Accompanied by Children

April 2020 - March 2022

At WTHSP **Expansion** Sites



Expansion Sites



53%
1 child



28%
2 children



19%
3+ children

At WTHSP **Existing** Sites by **Program Type**



Transition Homes



52%
1 child



29%
2 children



19%
3+ children



Safe Homes



55%
1 child



31%
2 children



14%
3+ children



Second Stage Housing



53%
1 child



30%
2 children



17%
3+ children

WTHSP: Where To Upon Departure

Completed Stays for Women at WTHSP Sites by Where To After and Program Type

April 2020 – March 2022

After WTHSP Expansion Sites



31%

Housing & Second Stage Housing



33%

Other Shelter / Services



16%

Friends / Family



11%

Other



10%

Homelessness & Returned to Abusive Situation

After All WTHSP Existing Sites



33%

Housing & Second Stage Housing



13%

Other Shelter / Services



27%

Friends / Family



14%

Other



12%

Homelessness & Returned to Abusive Situation

Data Collection Challenges

- What were some of BC Housing's challenges with data collection during the pandemic?
- Discussion Question: What were some of your challenges with data collection during the pandemic? How were they mitigated?

Emergency Shelter: Outcomes

Almost 10% of completed stays at COVID-response emergency shelters in B.C.

went on to housing

in April 2020 -
March 2022.



Almost 1,400 supportive housing units have been created since April 2020 through purchases of properties used initially as COVID-response shelters

(e.g. purchase of hotels previously leased as COVID-response emergency shelters).



Physical distancing was created at existing emergency shelters without reducing capacity.



WTHSP: Outcomes

Between April 2020 and March 2022:

2300+

stays for women departed WTHSP programs (expansion and existing) to **housing and second stage housing** since the start of the pandemic³



87,000+

women were referred to **community services** by WTHSP programs (expansion and existing)⁴



71,000+

women were provided with **safety plans** by WTHSP programs (expansion and existing)⁵



1, 2, 3: It is possible that women stayed at more than one site or called more than one site for assistance during the reporting period and would, therefore, be counted more than once in this figure.

2, 3: Includes women who did not stay at the sites during the reporting period, but called or emailed for assistance.



Thank You!

Check out our tools at:

www.bchousing.org/research-centre

Subscribe to our research newsletter at:

www.bchousing.org/subscribe